

AUTHOR \_\_\_\_\_

NO. 7832

TITLE GENIZA

RR \_\_\_\_\_

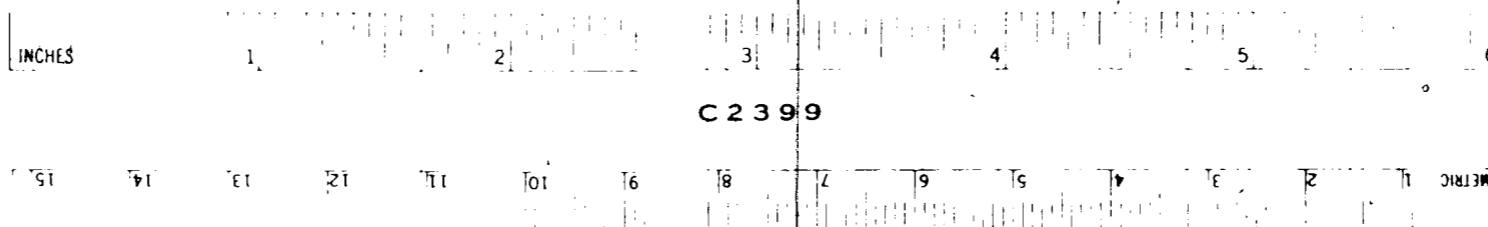
IMPRINT \_\_\_\_\_

CALL NO. ENA 3972

DATE MICROFILMED \_\_\_\_\_

These images are from the collection of the Library of the Jewish Theological Seminary (JTS). JTS holds the copyrights to these images. The images may be downloaded or printed by individuals for personal use only, but may not be quoted or reproduced in any publication without the prior permission of JTS.

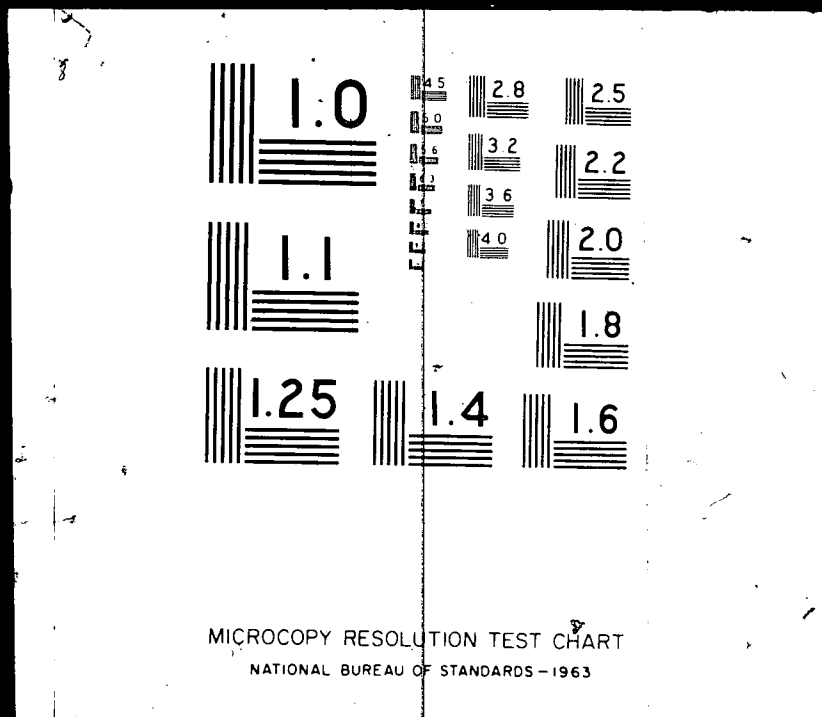
הועתק והוכנס לאינטרנט  
www.hebrewbooks.org  
ע"י חיים תש"ע



FILMED FOR THE JEWISH THEOLOGICAL SEMINARY OF AMERICA

**XEROX** University Microfilms

# RESOLUTION CHART



100 MILLIMETERS

**INSTRUCTIONS** Resolution is expressed in terms of the lines per millimeter recorded by a particular film under specified conditions. Numerals in chart indicate the number of lines per millimeter in adjacent "T-shaped" groupings.

In microfilming, it is necessary to determine the reduction ratio and multiply the number of lines in the chart by this value to find the number of lines recorded by the film. As an aid in determining the reduction ratio, the line above is 100 millimeters in length. Measuring this line in the film image and dividing the length into 100 gives the reduction ratio. Example: the line is 20 mm. long in the film image, and  $100/20 = 5$ .

Examine "T-shaped" line groupings in the film with microscope, and note the number adjacent to finest lines recorded sharply and distinctly. Multiply this number by the reduction factor to obtain resolving power in lines per millimeter. Example: 7.9 group of lines is clearly recorded while lines in the 10.0 group are not distinctly separated. Reduction ratio is 5, and  $7.9 \times 5 = 39.5$  lines per millimeter recorded satisfactorily.  $10.0 \times 5 = 50$  lines per millimeter which are not recorded satisfactorily. Under the particular conditions, maximum resolution is between 39.5 and 50 lines per millimeter.

Resolution, as measured on the film, is a test of the entire photographic system, including lens, exposure, processing, and other factors. These rarely utilize maximum resolution of the film. Vibrations during exposure, lack of critical focus, and exposures yielding very dense negatives are to be avoided.

The restoration of this manuscript

was made possible

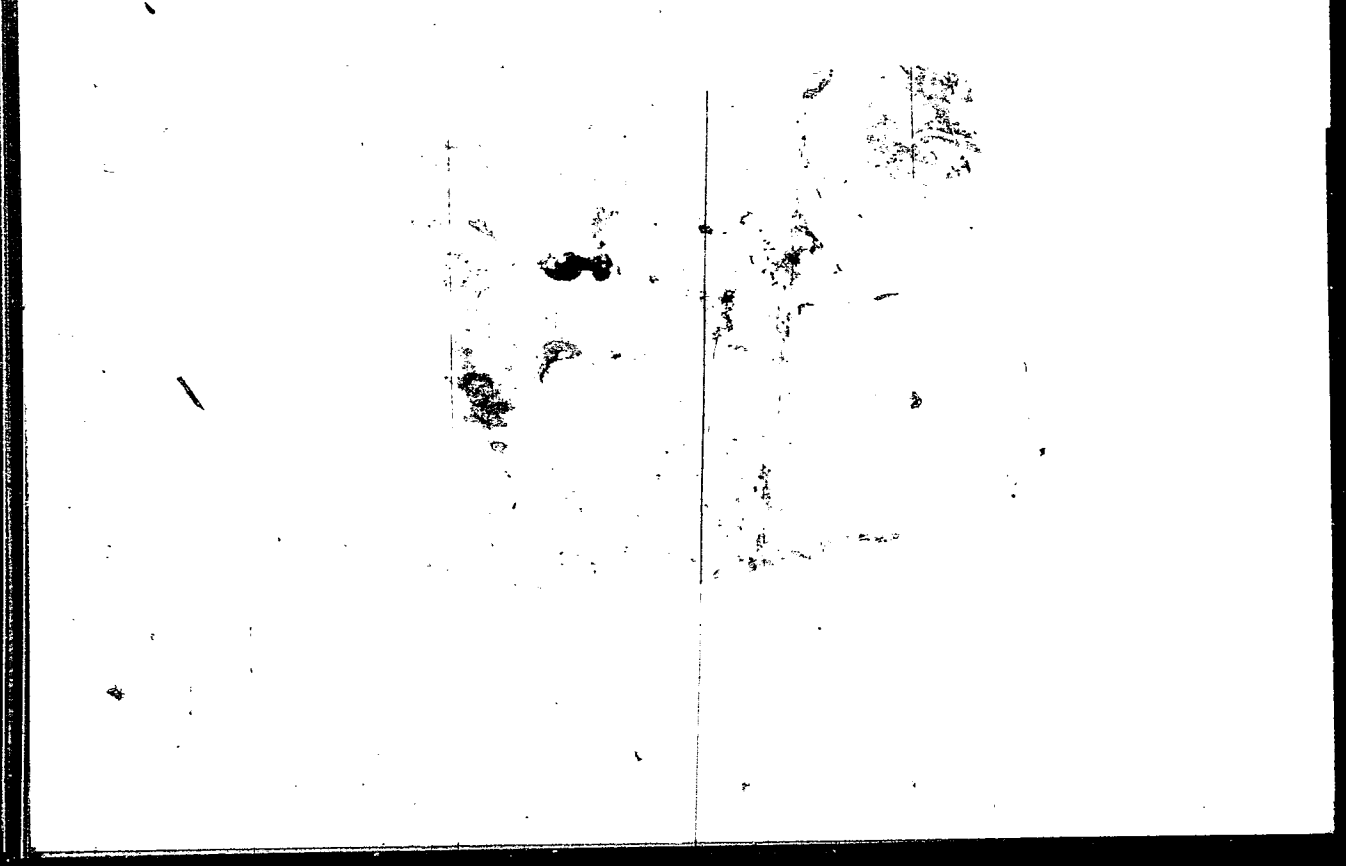
by the

Gustav Würzweiler

Foundation

Handwritten text in Arabic script, likely a signature or a note, located in the lower right quadrant of the page.

7



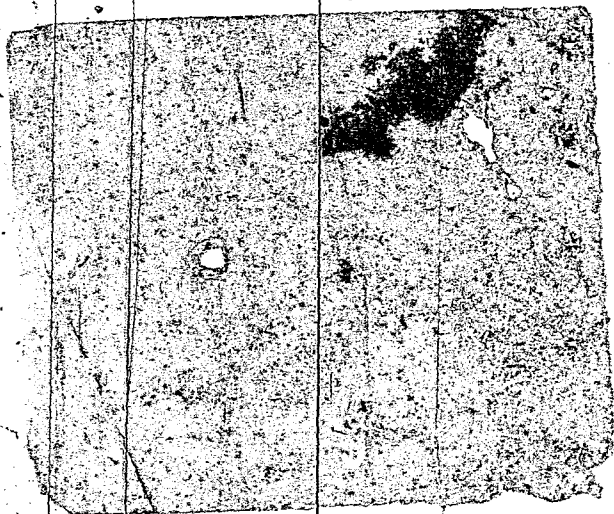


Handwritten text on a torn, dark, textured fragment, possibly a piece of paper or parchment. The text is written in a cursive script, likely Arabic or Persian, and is arranged in two columns. The fragment is heavily stained and has irregular, jagged edges. The text is difficult to decipher due to the high contrast and noise in the image.

Top left: *وعدت*  
Top right: *وعدت*  
Bottom left: *وعدت*  
Bottom right: *وعدت*

3, 1, 2, 3  
4, 5, 6, 7, 8, 9, 10, 11, 12, 13, 14, 15, 16, 17, 18, 19, 20, 21, 22, 23, 24, 25, 26, 27, 28, 29, 30, 31, 32, 33, 34, 35, 36, 37, 38, 39, 40, 41, 42, 43, 44, 45, 46, 47, 48, 49, 50, 51, 52, 53, 54, 55, 56, 57, 58, 59, 60, 61, 62, 63, 64, 65, 66, 67, 68, 69, 70, 71, 72, 73, 74, 75, 76, 77, 78, 79, 80, 81, 82, 83, 84, 85, 86, 87, 88, 89, 90, 91, 92, 93, 94, 95, 96, 97, 98, 99, 100





Handwritten scribbles or marks, possibly initials or a signature, located in the bottom left corner of the page.

J  
1

Handwritten text on a rectangular piece of paper, possibly a label or note, placed on a lined background. The text is written in a cursive script and appears to be:

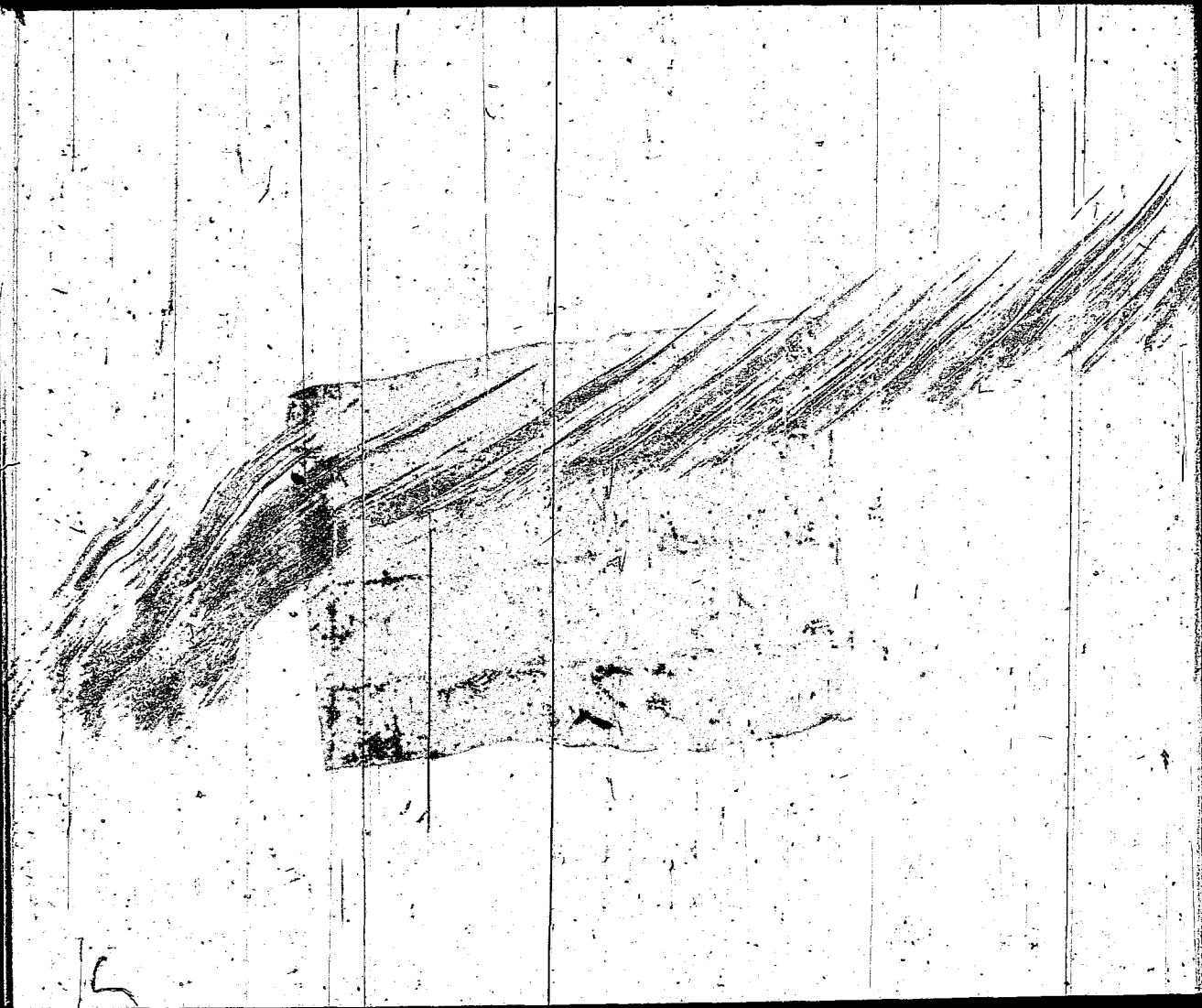
1  
C. W. ...  
...  
...

Handwritten text in a dark, rectangular area, possibly a stamp or seal, containing illegible characters.

Handwritten mark or character at the top center of the page.

Vertical handwritten text or markings along the right edge of the page.

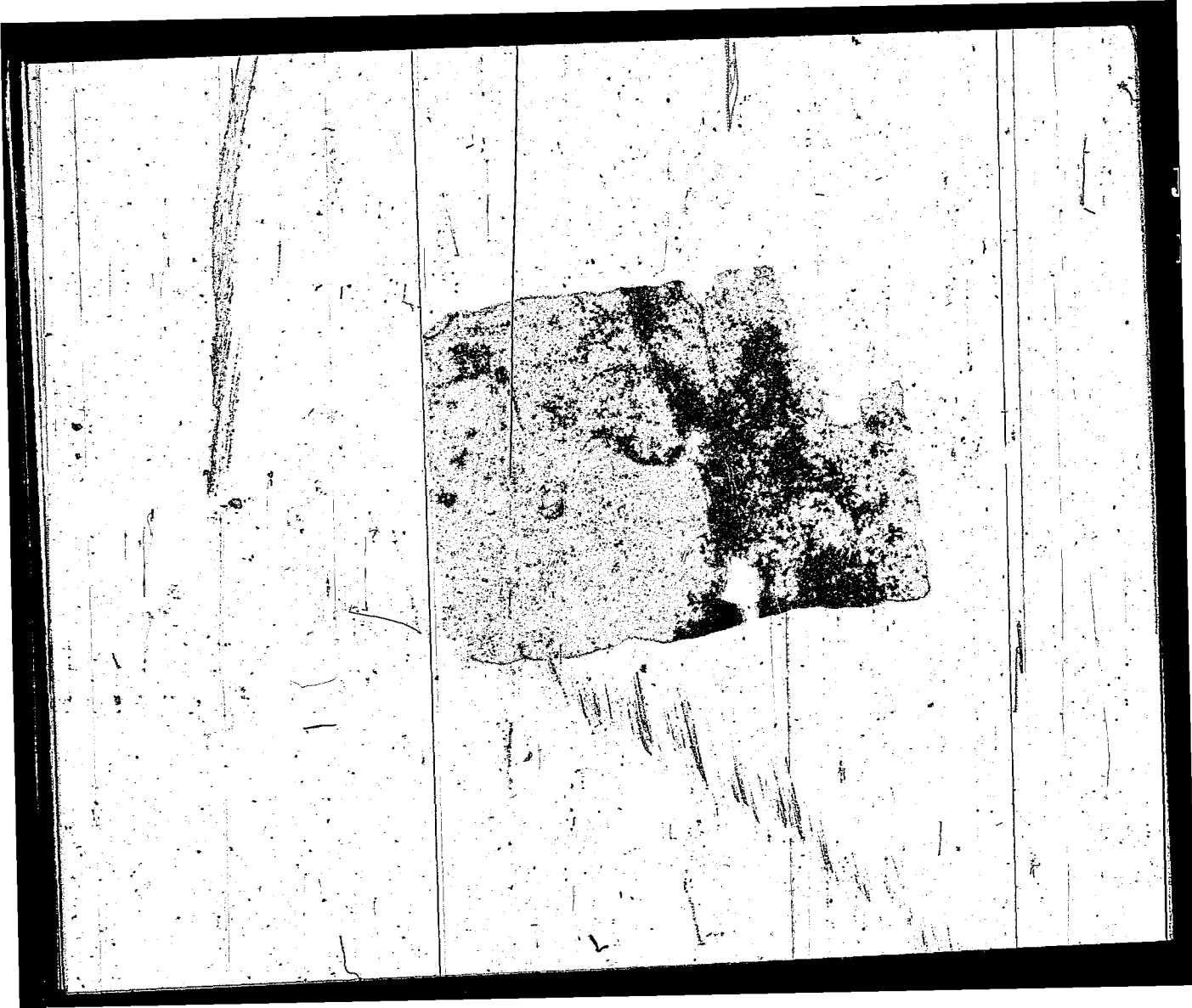
Handwritten text in Arabic script, possibly a signature or name, located in the center of the page. The text is written on a rectangular piece of paper that is slightly tilted and has some dark smudges or ink bleed-through. The script is cursive and appears to be a personal name or signature.



Handwritten text on a rectangular piece of paper, likely a label or note, placed on a lined notebook page. The text is written in Arabic script and reads:

ل  
حرف اول  
ال  
عنه







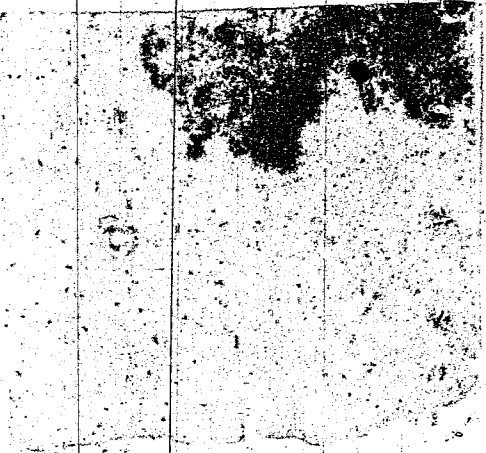
Handwritten text on a piece of paper, possibly a note or label, with some illegible characters and a large, dark, irregular mark.



Handwritten text on a rectangular piece of paper, possibly a label or note, with illegible characters.



Pe.



۱  
رضوانی  
۱۴۵  
رضوانی

Handwritten text in a rectangular box, likely a library stamp or label. The text is written in a cursive script, possibly Urdu or Persian, and is arranged in three lines. The first line contains the characters 'کتاب' (Kitab), the second line contains 'مکتبہ' (Maktabah), and the third line contains 'کراچی' (Karachi). The text is dark and stands out against the lighter, textured background of the box.

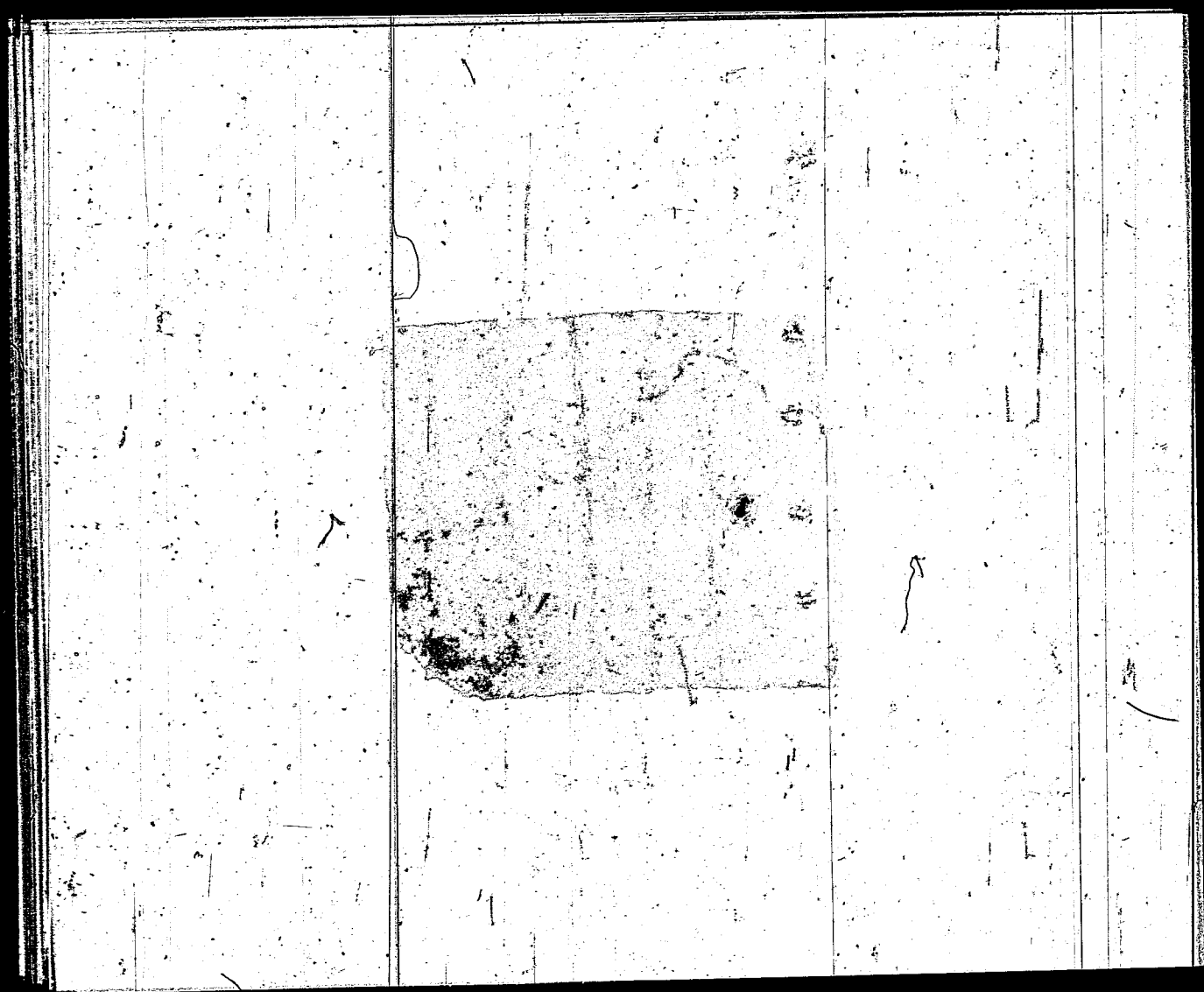
Handwritten text in Arabic script, possibly a signature or name, located on a dark, rectangular patch in the center of the page. The text is written in a cursive style and appears to be a name or title, though it is difficult to decipher due to the dark background and some fading. The text is arranged in two lines, with the top line being shorter than the bottom line.



مردان  
۴۵

۴

slg  
que me  
And





۳۷  
عربی

عربی  
۳۷



Handwritten text on a rectangular piece of paper, possibly a label or note, placed on a lined background. The text is written in dark ink and appears to be:

7-25  
5-16

٥٠  
١٠  
١٠٠  
١٠٠٠

J  
E  
3

de  
L  
E

George  
H

205 2  
Lumber

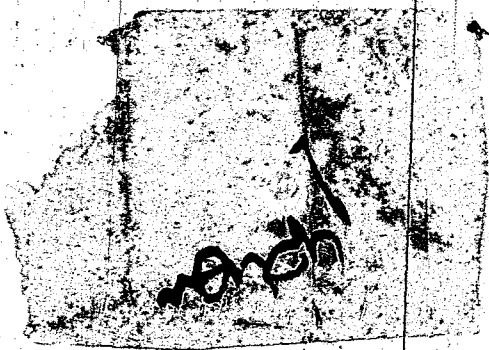
18 2/3





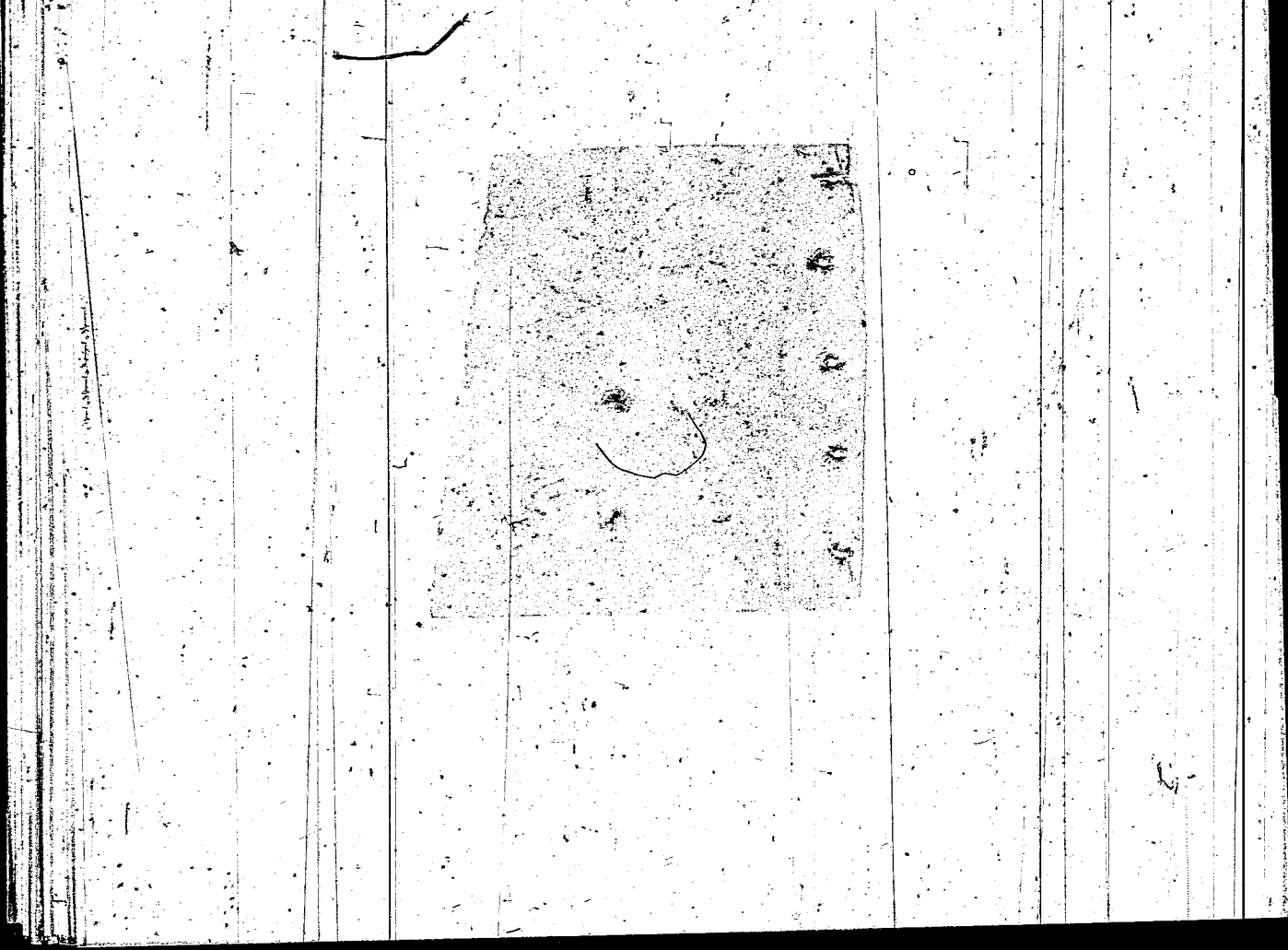


۲  
حرفی سبب  
سبب سبب سبب



بِسْمِ اللَّهِ الرَّحْمَنِ الرَّحِيمِ  
سورة الفاتحة  
الحمد لله رب العالمين  
الذي هدانا لهذا  
ما كنا لنهتدي لولا  
هدى الله لنا  
والحمد لله رب العالمين

بسم الله الرحمن الرحيم  
الحمد لله رب العالمين  
والصلاة والسلام على  
سيدنا محمد وآله الطيبين  
الطاهرين



ل  
لل  
ف  
٥  
ل  
ل  
ل

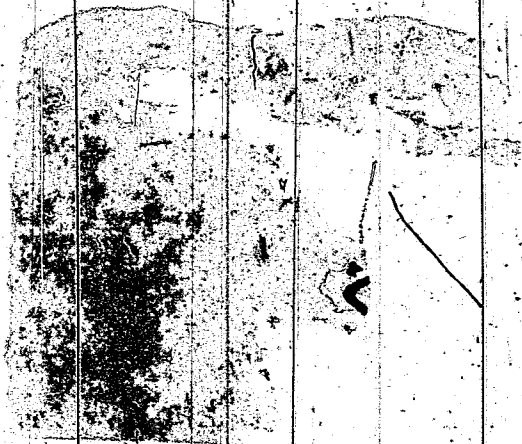


Handwritten text in Arabic script, possibly a signature or a note, located in the center of the page. The text is written in a cursive style and is somewhat obscured by a dark, irregular smudge or ink blot.



Q

SECRET  
SECRET



25

7

9038

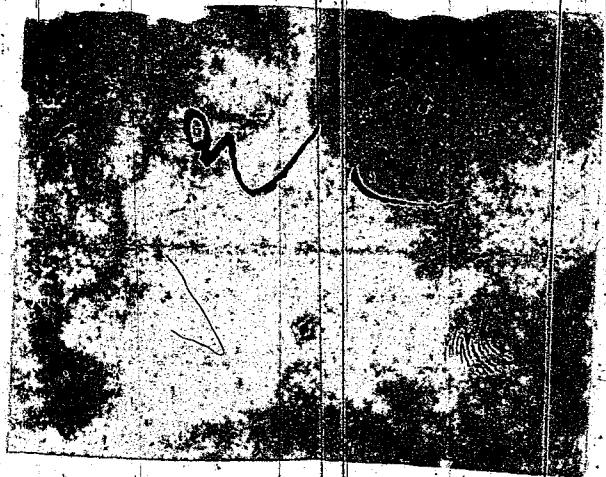
مورطوب  
ل  
وع  
٩  
مورطوب  
ل  
وع  
٩  
مورطوب  
ل  
وع  
٩

Handwritten text in Arabic script, possibly a signature or a short note, located on a rectangular piece of paper or parchment. The text is dark and appears to be written in a cursive style. The visible words include:

بسم الله الرحمن الرحيم  
الحمد لله رب العالمين  
والصلاة والسلام على سيدنا محمد وآله  
الطيبين الطاهرين  
الطاهرين

J  
E  
3

Handwritten text on a dark, textured rectangular piece of paper or card, possibly a label or note, placed on a light-colored, vertically lined background. The text is written in a cursive, stylized script. The top line reads "Handwritten" and the bottom line reads "Handwritten".





سوره  
قصص  
قصص  
قصص  
قصص



Handwritten text in Arabic script, possibly a signature or name, located on a dark, rectangular stamp or seal. The text is partially obscured by a dark, irregular mark at the top of the stamp. The stamp is positioned on the right side of the page, overlapping the vertical lines.



REPRODUCED FROM THE  
RECORDS OF THE SEMINARY

AUTHOR \_\_\_\_\_

NO. 7832

TITLE

GENIZA

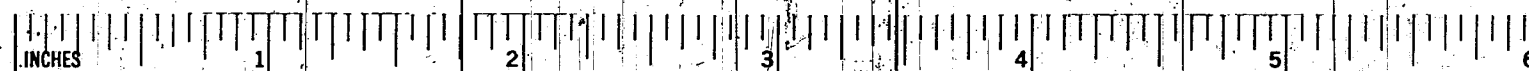
RR \_\_\_\_\_

IMPRINT \_\_\_\_\_

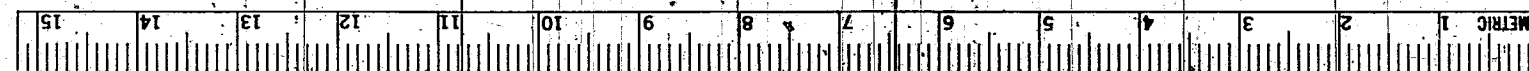
CALL NO.

ENA 3972

DATE MICROFILMED \_\_\_\_\_



C 2369



FILMED FOR THE JEWISH THEOLOGICAL SEMINARY OF AMERICA

**XEROX**

**University Microfilms**