

AUTHOR _____

NO. 7828

TITLE GENIZA

RR _____

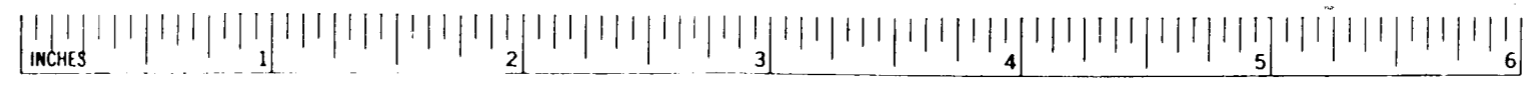
These images are from the collection of the Library of the Jewish Theological Seminary (JTS). JTS holds the copyrights to these images. The images may be downloaded or printed by individuals for personal use only, but may not be quoted or reproduced in any publication without the prior permission of JTS.

IMPRINT _____

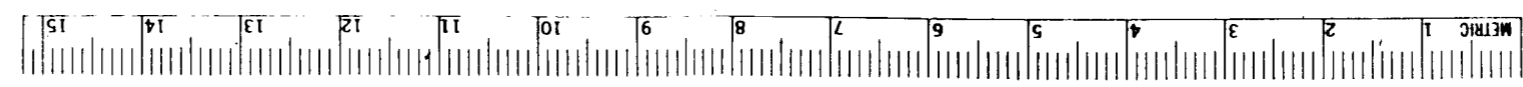
CALL NO. ENA 3968

הועתק והוכנס לאינטרנט
www.hebrewbooks.org
ע"י חיים תש"ע

DATE MICROFILMED _____



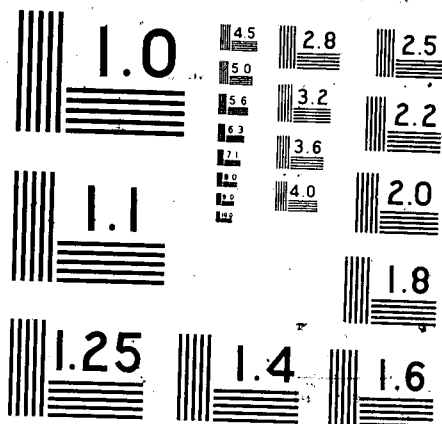
C 2399



FILMED FOR THE JEWISH THEOLOGICAL SEMINARY OF AMERICA

XEROX University Microfilms

RESOLUTION CHART



MICROCOPY RESOLUTION TEST CHART
NATIONAL BUREAU OF STANDARDS - 1963

100 MILLIMETERS

INSTRUCTIONS Resolution is expressed in terms of the lines per millimeter recorded by a particular film under specified conditions. Numerals in chart indicate the number of lines per millimeter in adjacent "T-shaped" groupings.

In microfilming, it is necessary to determine the reduction ratio and multiply the number of lines in the chart by this value to find the number of lines recorded by the film. As an aid in determining the reduction ratio, the line above is 100 millimeters in length. Measuring this line in the film image and dividing the length into 100 gives the reduction ratio. Example: the line is 20 mm. long in the film image, and $100/20 = 5$.

Examine "T-shaped" line groupings in the film with microscope, and note the number adjacent to finest lines recorded sharply and distinctly. Multiply this number by the reduction factor to obtain resolving power in lines per millimeter. Example: 7.9 group of lines is clearly recorded while lines in the 10.0 group are not distinctly separated. Reduction ratio is 5, and $7.9 \times 5 = 39.5$ lines per millimeter recorded satisfactorily. $10.0 \times 5 = 50$ lines per millimeter which are not recorded satisfactorily. Under the particular conditions, maximum resolution is between 39.5 and 50 lines per millimeter.

Resolution, as measured on the film, is a test of the entire photographic system, including lens, exposure, processing, and other factors. These rarely utilize maximum resolution of the film. Vibrations during exposure, lack of critical focus, and exposures yielding very dense negatives are to be avoided.

بيننا

انا من اهوى ومن اهوى انا الحز دوح

حللنا بدنا =

بنا لاج ورفق الحز وبتنا بها قسا

الامر

فما لنا حزن ولا فلاح وما لنا فلاح ولا حزن

صهوه
ما حولتها من الحقيقه المله
فينا فانها عوام ولا معارف في و هو واقف
على مقاصد الا براد دورا و ستوقا و
انها في حذر الاحرار شهر دار و عشقنا
فان قيتك ارب في تلبيه اهل المشاهل

از سوره عالی

۱۱ ۳۳۹۲

أعمالنا بعد إلى الأردن
للإدارة العامة
للإدارة العامة
للإدارة العامة

عنه
والله اعلم
بالحق
والله اعلم
بالحق

ویرحال نه اندری نوسال صد
این سال
سازگار و کاره سال نویسه اللهم
لها التوسل
لیرتقلز عذر

لعمري
بما
سأفعل

والله

أعلم
بما
أفعل

والله

أعلم
بما
أفعل

Handwritten text in Arabic script, possibly a list or a set of instructions, written on a rectangular piece of paper. The text is arranged in several lines, with some characters appearing to be stylized or abbreviated. The paper shows signs of wear, including dark smudges and a large, irregular dark stain on the left side. The text is written in black ink on a light-colored background.

Handwritten text in Arabic script, possibly a list or a set of instructions, written on a rectangular piece of paper. The text is arranged in several lines, with some characters appearing to be stylized or abbreviated. The paper shows signs of wear, including dark smudges and a large, irregular dark stain on the left side. The text is written in black ink on a light-colored background.

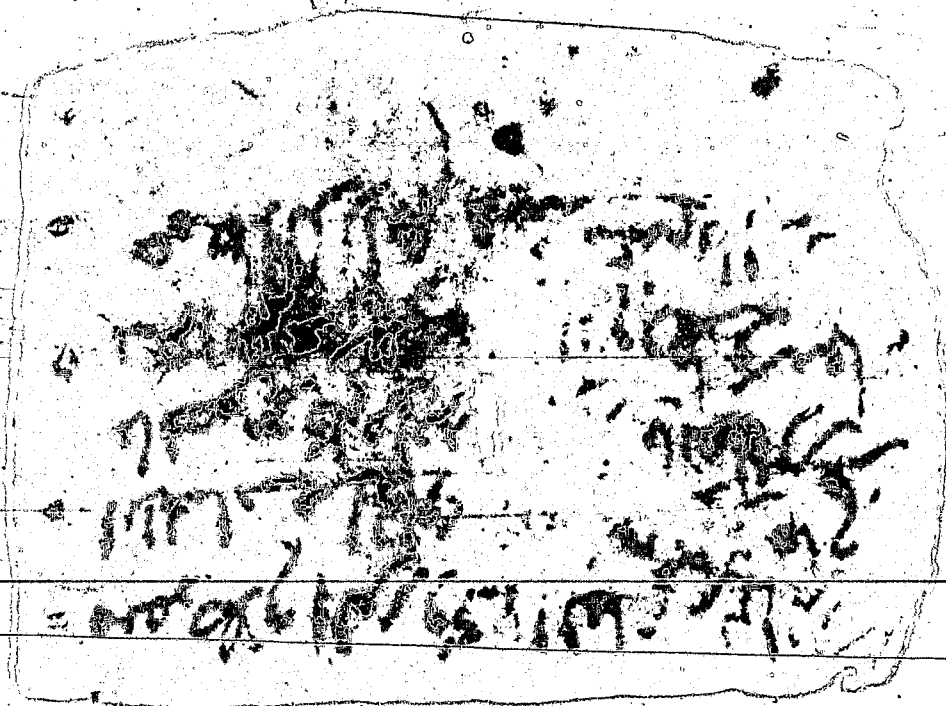
Handwritten text in a rectangular box, likely a list or record. The text is written in a cursive script, possibly Urdu or Persian, and is arranged in several lines. The text is somewhat faded and difficult to read precisely, but appears to contain names and possibly dates or numerical values. The script is written in dark ink on a light-colored, textured paper.







Handwritten text in Arabic script, possibly a signature or a short note, located in the center of the page. The text is written in a cursive style and is somewhat faded and difficult to read. It appears to be a signature or a short note, possibly starting with 'بسم الله الرحمن الرحيم' (In the name of Allah, the Most Gracious, the Most Merciful).



بسم الله الرحمن الرحيم
الحمد لله الذي جعل في كل شيء
دروسا لمن يفتقر الى الله
ويعتمد على نفسه
فمنه علم ان الله لا يهدي
القوم الضالين
الحمد لله الذي جعل في كل شيء
دروسا لمن يفتقر الى الله
ويعتمد على نفسه
فمنه علم ان الله لا يهدي
القوم الضالين
الحمد لله الذي جعل في كل شيء
دروسا لمن يفتقر الى الله
ويعتمد على نفسه
فمنه علم ان الله لا يهدي
القوم الضالين



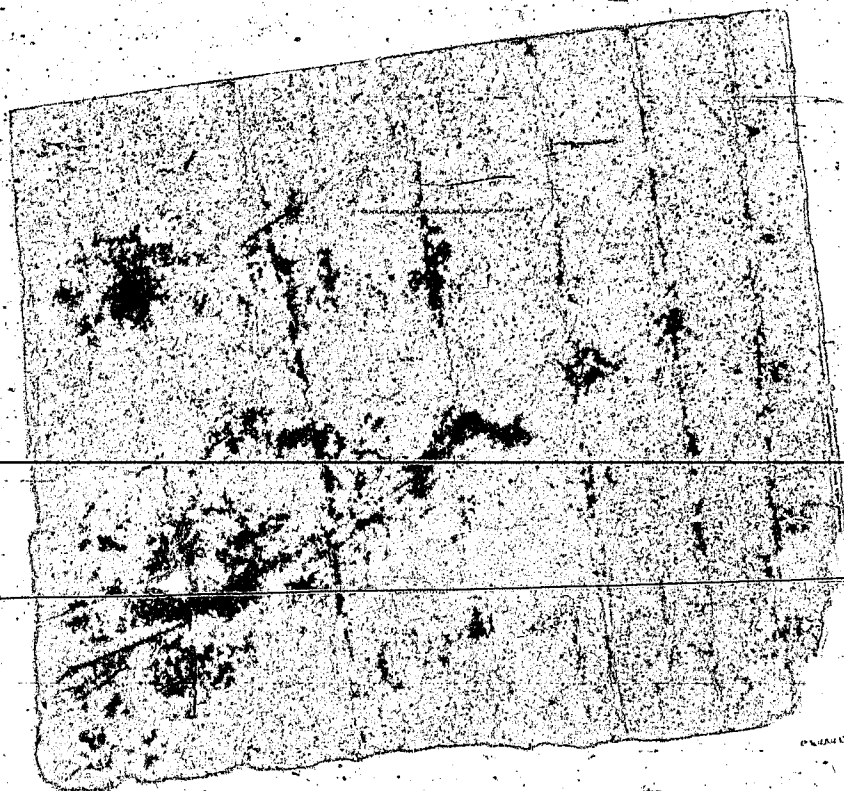
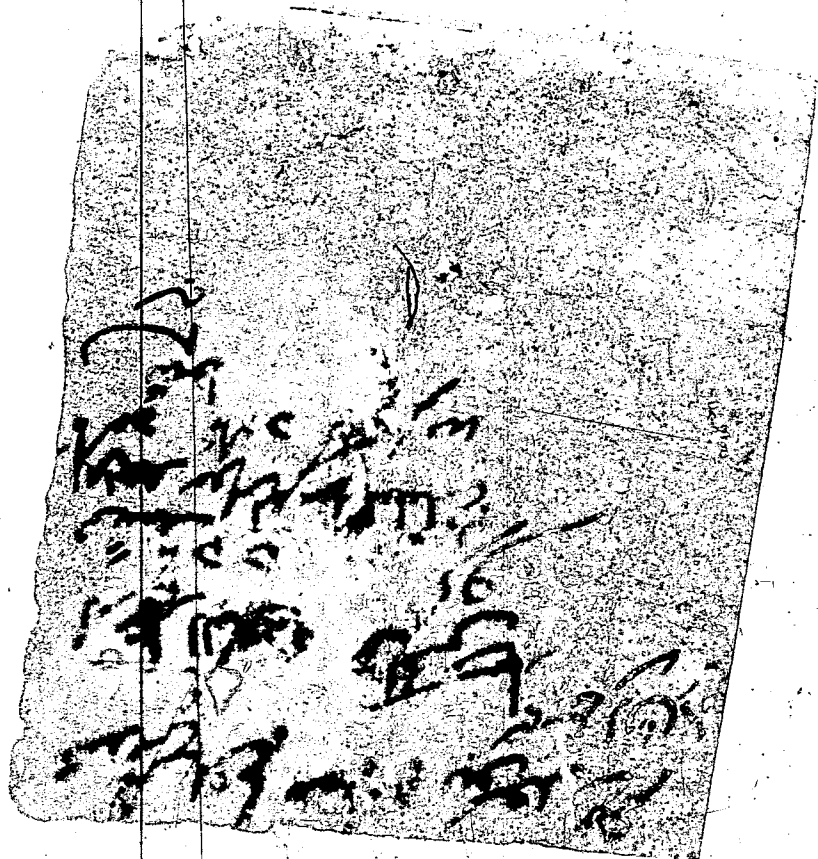
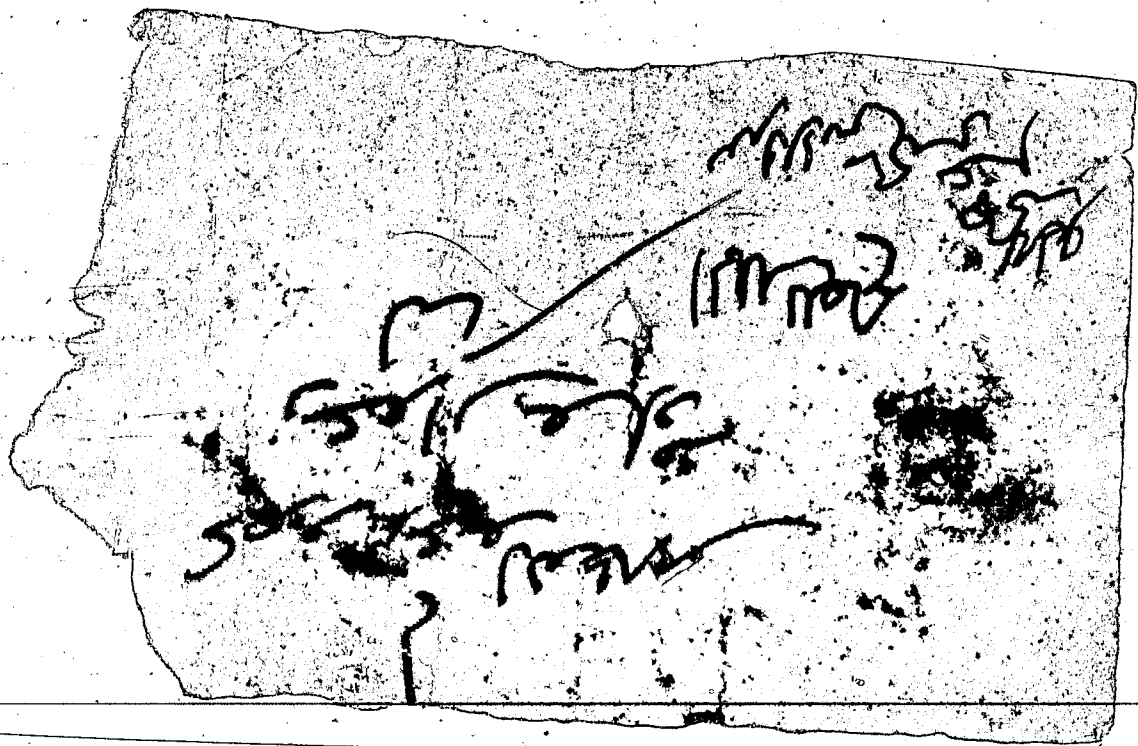


PLATE 10

1000



لأخيه
والصالحين
للشيخ جامع وفان يسلمه
شوقاً
سنة ١٢٩٠



عاشق
سید احمد
بازو
سازگار
میرزا محمد

وید عینا الرسول
وید عینا الرسول
وید عینا الرسول
وید عینا الرسول

بها تشوید و در بی صبح و علی حاشی

با کربسها و فلان در بیقی صلاقی

عظایم
بدری و فتاوی

عبد الحق المولى على بن
سوف ارضه
محمد بن ابي عبد الله
لما ربي حمد بن

والله اعلم
بالحق

ع

عبد الله لولا الله
وغيره

ع

المجلس
لم يوافق
على
التمويل
للمشروع
لأنه
يحتاج
إلى
موافقة
السلطات
المختصة

۵

مردم را در این راه
و در این راه
و در این راه

بسم الله الرحمن الرحيم
الحمد لله الذي هدانا لهذا
أما كنا لنهتدي لولا أن هدانا الله

والصلاة والسلام على
سيدنا محمد وآله الطيبين
الطاهرين أجمعين
اللهم صل على محمد
وعلى آل محمد
اللهم صل على
سيدنا محمد
وعلى آل محمد
اللهم صل على
سيدنا محمد
وعلى آل محمد

Handwritten text in Arabic script, possibly a signature or a note, written on a piece of aged, stained paper. The text is arranged in two main lines, with some characters appearing to be crossed out or written over. The paper is heavily textured and shows signs of wear, including dark stains and a small circular mark near the top left corner.

Handwritten text in Arabic script, possibly a signature or a note, located in the center of the page. The text is written in dark ink on a light background. The words are arranged in several lines, with some characters appearing to be part of a name or a specific phrase. The handwriting is somewhat cursive and difficult to decipher precisely due to the image quality.

نصف رطل و غلا على النار

ببريد و عود و عسل على

نصف رطل نساء عود و ناسخ

n: 24 attached
fragment 29
1965

ويعلمكم من قبل لور عزاوي
مفتشور وفتح معكم لا مشا
قبل سكر امضى نفع من الحار

ادهب البلاغم والارياح وحو
التي وقان ومن اخذون
مقالين شيخ وقتار برطلة

25
agnen 28
965

روز در هم و جعلت بی بیته
موشه و اکلنا شغل دلک
ایام حمال دلک و قان ادا

و اسما
2418
#2

يخفون ذلك قال اذا صحت

اوقية فخرنقل وحطنتها في لبن

وشربتها نفع السابوق قال

J
E
3

26
agm 27
1965

فرومایج و دارایی وزارد
اجزاید قو و بخلو و بعیندی
شهادت و رع الرکوه و قرائت

nt 2.7 detached
fragment 26
1965

وسكوا حرم اجزا وتينو
فندى لآحيات يدق الحوايج
وليتو بالنس وتعلمم فتايل

طیور زدی و کند را بصد اجزا

سکن و بست عمل تمام و بیتر

و و بعد تمام ترا من فعله

بقوة تدرك الجميع ولتوفي شهد مشرد
والله اسد وانشقوا
الرموه الشربه منهم متقال
لك صفة حمود الايام

crit 29 detached
fragment 24
1965

وكل ما في الدنيا
المرحوم او قطره ماء
فانما هي كسرة



AUTHOR _____

NO. 7828

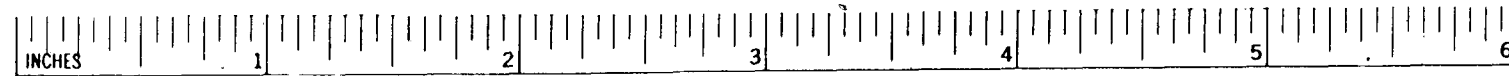
TITLE GENIZA

RR _____

IMPRINT _____

CALL NO. ENA 3968

DATE MICROFILMED _____



C2399



FILMED FOR THE JEWISH THEOLOGICAL SEMINARY OF AMERICA

XEROX University Microfilms